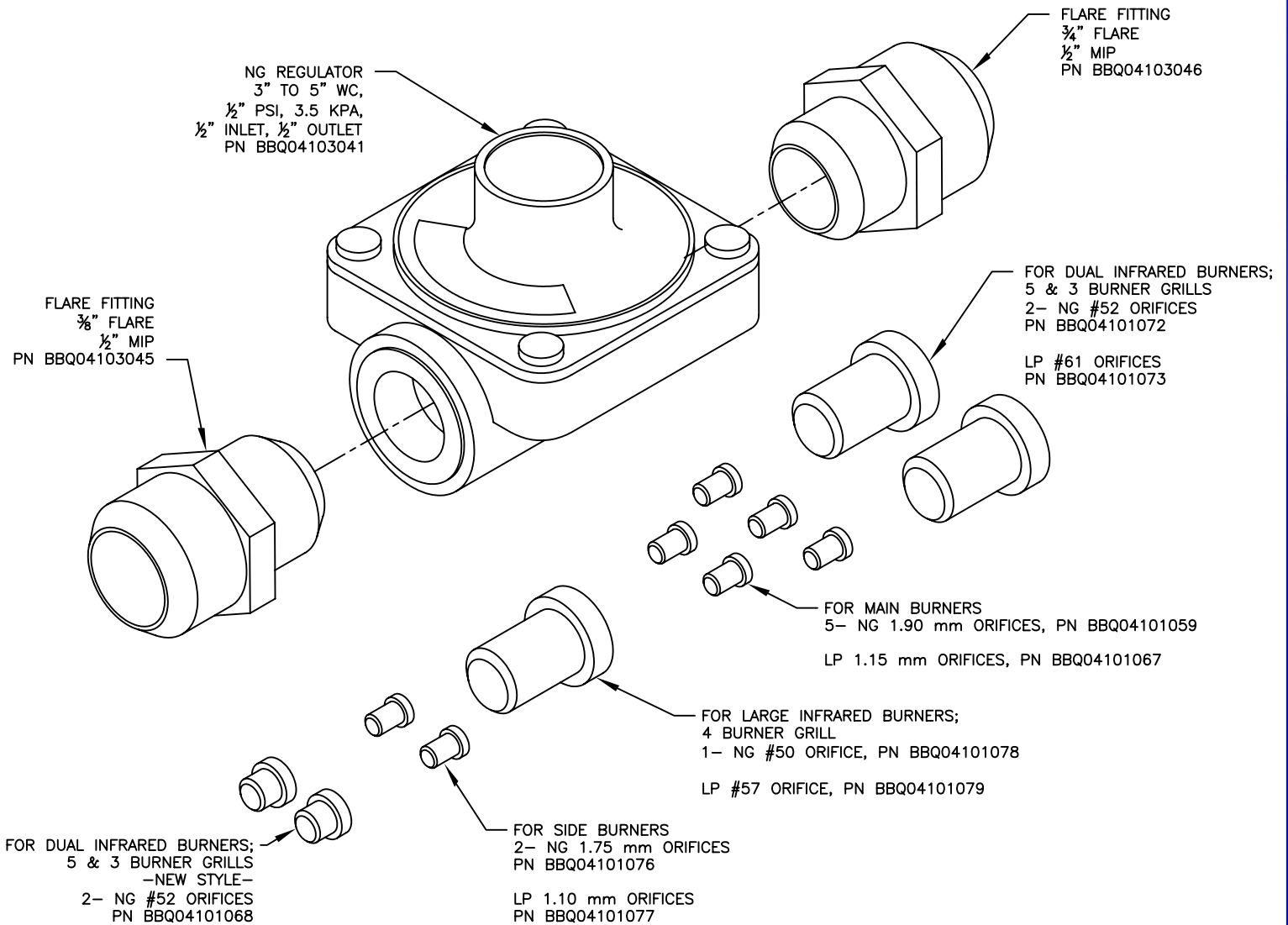
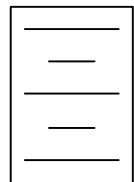


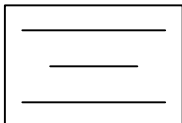
LINE	BBQ LINE
MODEL	NG CONVERSION KIT
NUM	



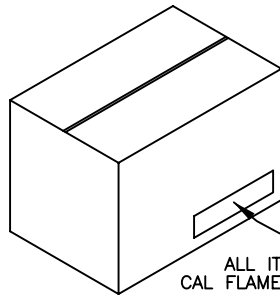
WARNING! You must have an authorized service technician perform this procedure. If these instructions are not followed exactly, a fire or explosion may result causing property damage, personal injury or loss of life. California Acrylics Industries (C.A.I.) will not be held responsible for an improperly converted gas grill.



INSTALLATION
INSTRUCTIONS



CONVERSION TO NG
LABEL



ALL ITEMS CONTAINED IN
CAL FLAME BOX W/PART NUMBER



TITLE	2014 BARBECUE LINE GRILL ACCESORIES NG CONVERSION KIT		
SCALE:	DWG NO. BBQ07101045	DWG BY S. LINARES	
REVISED	REV. DESCR.	DATE 01/01/14	

NOTE:
DUE TO OUR CONTINUOUS IMPROVEMENT PROGRAM, ALL MODELS
AND SPECIFICATIONS ARE SUBJECT TO CHANGE WITHOUT NOTICE.